



Donor Network West saves and heals lives through organ and tissue donation. We honor and respect the donors and families we serve with compassionate care, and inspire our communities to donate life.



A Donate Life Organization

**Main Office:**

Donor Network West  
12667 Alcosta Blvd., Suite 500  
San Ramon, CA 94583

**Fresno Office:**

Donor Network West  
1040 East Herndon Ave. #104  
Fresno, CA 93720

**San Leandro Office:**

Donor Network West  
1850 Fairway Dr.  
San Leandro, CA 94577

**Reno Office:**

Donor Network West  
1495 Ridgeway Dr. #90  
Reno, NV 89519

**DONORNETWORKWEST.org**

**888.570.9400**



# A Defining Moment

2014 REPORT TO THE COMMUNITY



*Heal a life through organ and tissue donation*

## Our Mission

Donor Network West saves and heals lives through organ and tissue donation. We honor and respect the donors and families we serve with compassionate care, and inspire our communities to donate life.

On the cover: Ailee (5), liver recipient

## Letter from the CEO

Each of us can think of a moment in our lives that was so transformational that it simply took our breath away. We can also think of different occasions that seem simple yet are equally cherished; a perfect day at the park, a family reunion, or your first big move.

For nearly three decades, we have been honored to facilitate many beautiful moments through the miracle of organ, eye, and tissue donation as the California Transplant Donor Network (CTDN), and now as Donor Network West. The accomplishments for 2014, attained under CTDN, were made possible by the selfless donors, giving families, partner hospitals, coroners, and funeral homes that partner with us to save and heal lives.

We are in the midst of a defining moment with our recent name change and move to our new headquarters in San Ramon, CA. We are delighted to share our defining moments with you. We've rebranded, we've moved, and we now look forward to better serving our communities. Thank you for your continued partnership, as we work together to save and heal more lives.

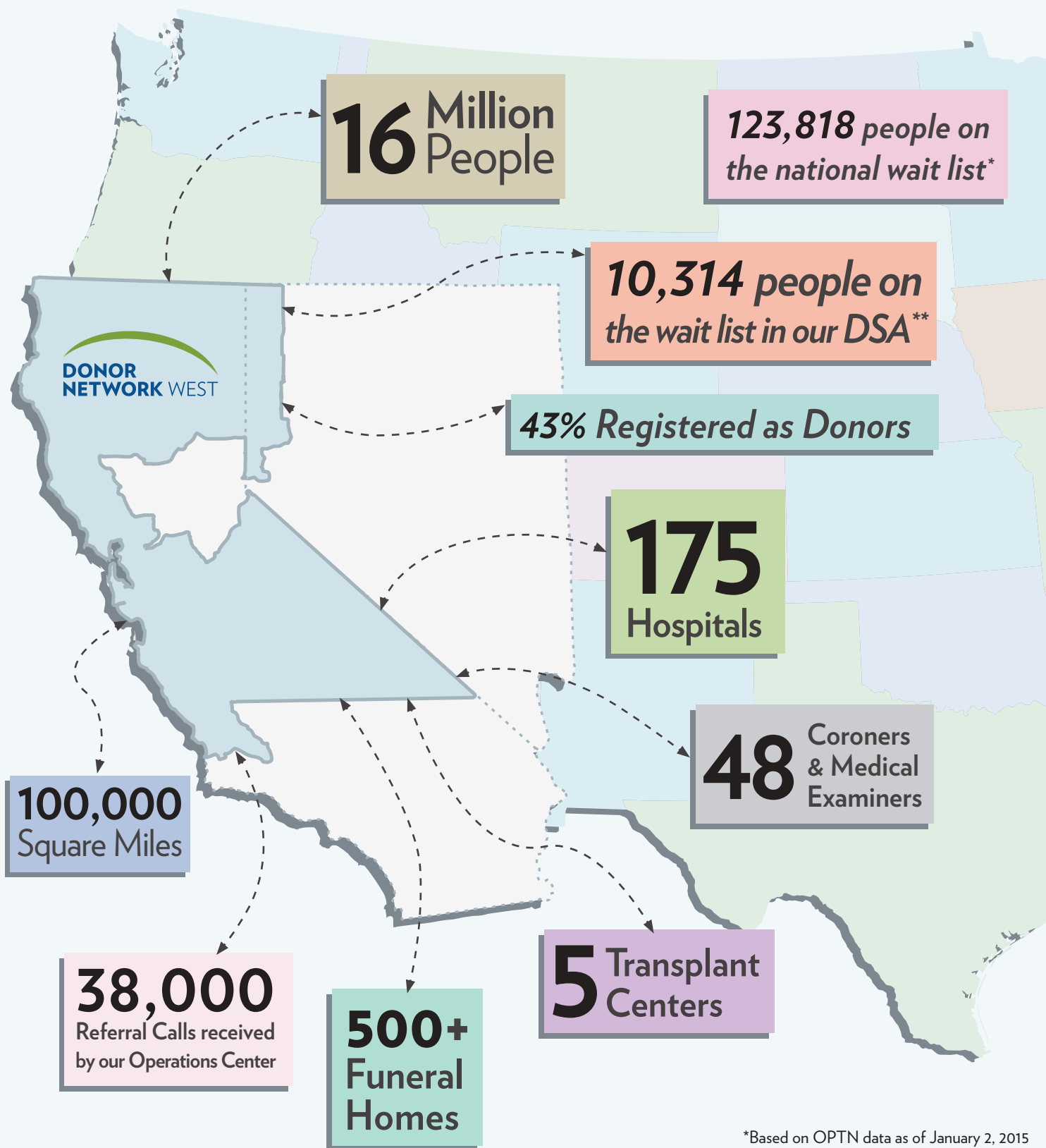
Cindy Siljestrom

*Cindy Siljestrom*  
Chief Executive Officer





## Donor Network West Donation Service Area



\*Based on OPTN data as of January 2, 2015

\*\*Based on OPTN data as of December 31, 2014

Ailee brightens the day of those around her with her jokes and infectious smile. Ailee's defining moment came early; she was only six months old when she received a liver transplant that saved her life. Now five years old, she loves singing, dancing, drawing, and pretending to be a princess.

## Ailee's Defining Moment





## Kenny's Defining Moment




Kenny was an all-around athlete until he injured his knee. His defining moment came when he received an ACL that allowed him to go back to playing and coaching baseball. Thanks to the gift of mobility, he can also enjoy his other favorite sports: football, basketball, weight lifting, and rock climbing.




# ORGANS

**305**  
ORGAN  
DONORS

**475**  
  
Kidneys

**245**  
  
Livers

**132**  
  
Lungs

**115**  
  
Hearts

**39**  
  
Pancreas


**1**  
  
Intestine

**1,007**  
ORGANS  
TRANSPLANTED

# TISSUES

**2,223**  
TISSUE  
DONORS

**1,785**  
  
Skin

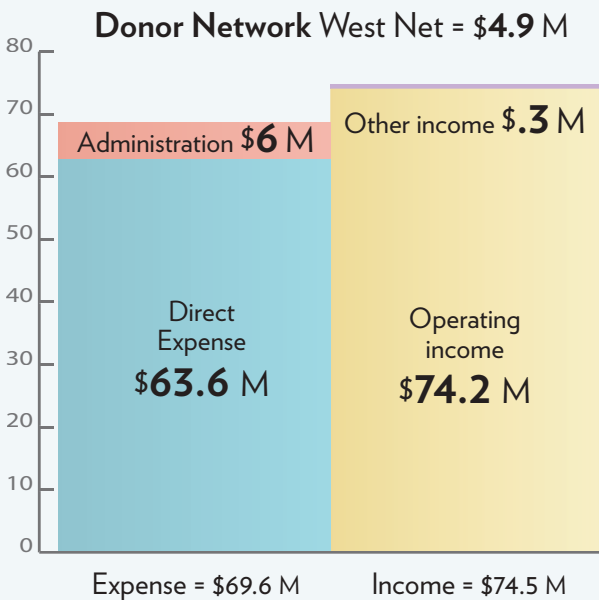
**1,497**  
  
Corneas

**1,341**  
  
Bones

**174**  
  
Heart Valves

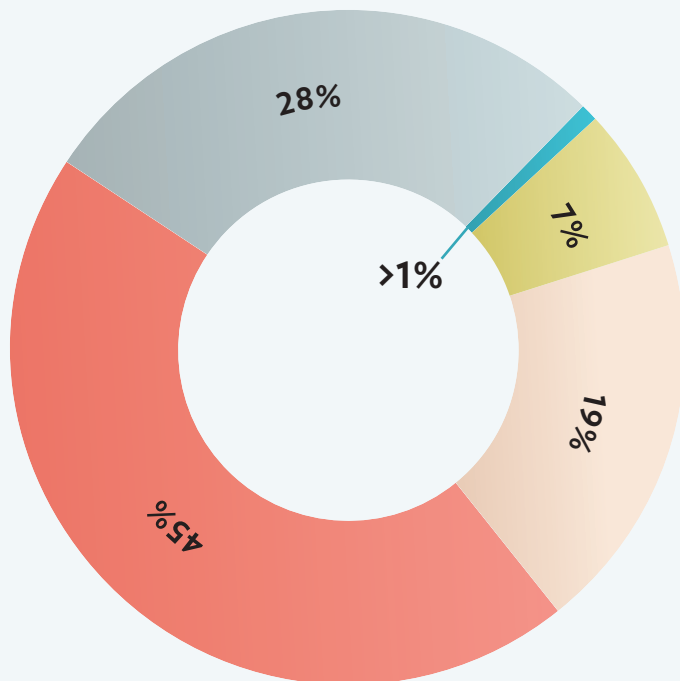
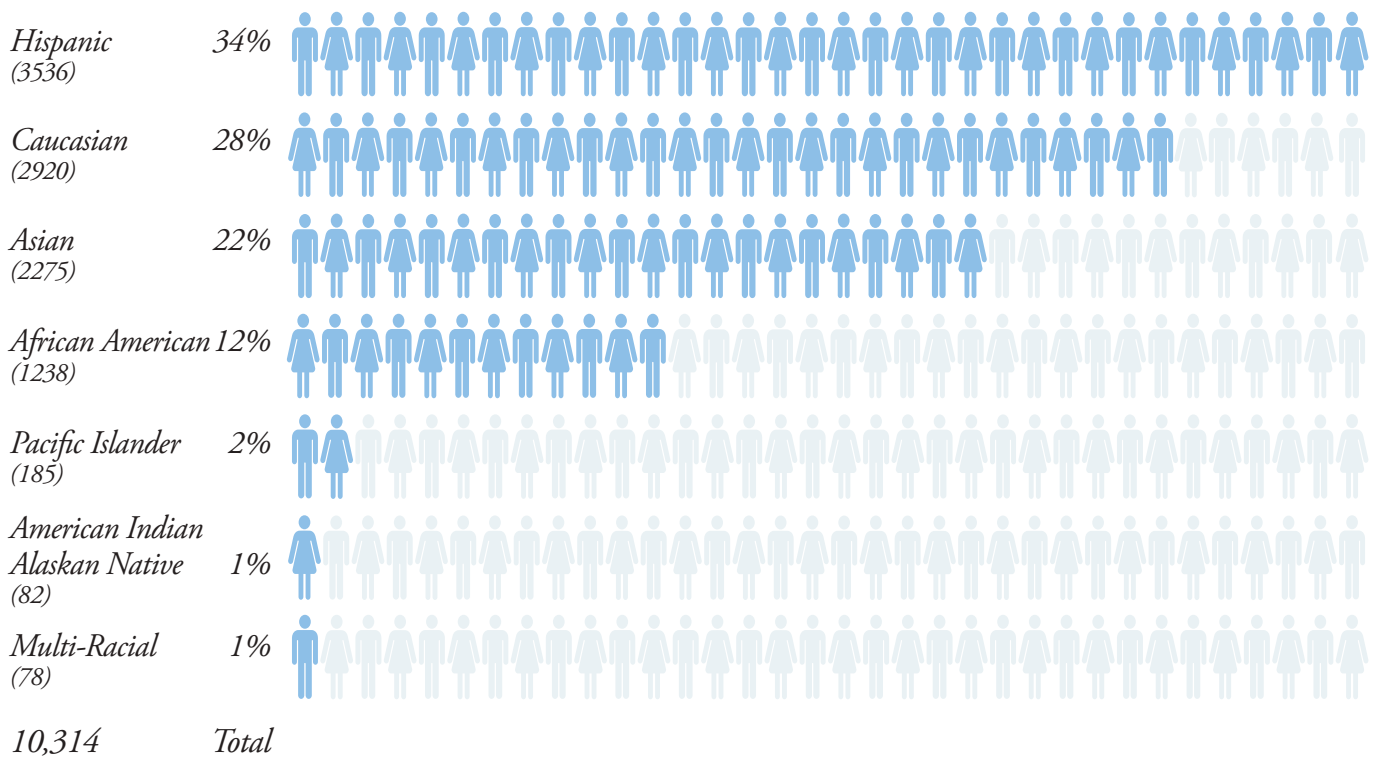
**11**  
  
Veins

**92,000**  
LIVES  
IMPROVED

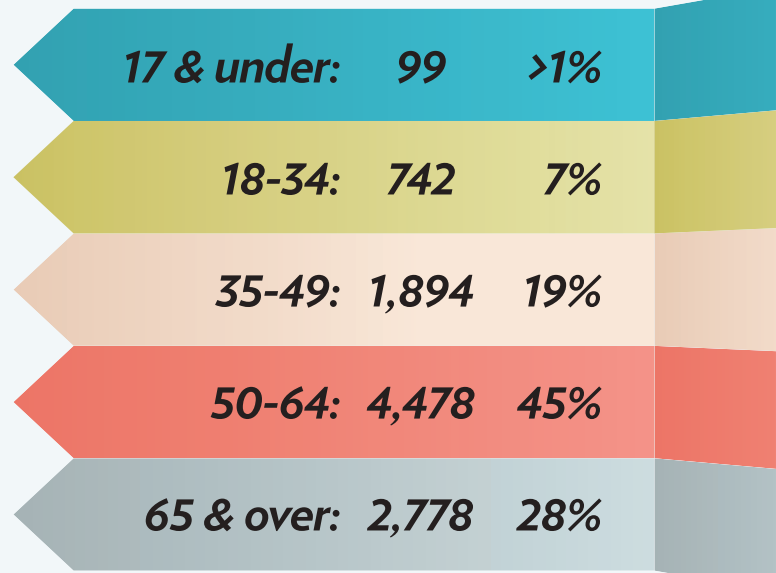




## Transplant Wait List by Ethnicity\*



## Transplant Wait List by Age\*\*



\*Based on OPTN data as of December 31, 2014

\*\*Based on OPTN data as of May 8, 2015

## Mohan's Defining Moment

Mohan was at the height of his career as an engineer when he suffered his first heart attack at the age of 35. His defining moment came more than 22 years ago when he received a donated heart and, though he has enjoyed great success as an entrepreneur; nothing brought him more joy than being able to see his daughters grow up. During the hard times, Mohan found strength and comfort in his family and his faith.

Left to right: Subina, Arvinder, Mohan, Simran, and Kulwant





## 2014 Board Of Directors

### Chairperson

**Nancy Lee, RN, MSN, NEA-BC**  
Chief Nursing Officer &  
VP of Patient Care Services  
Stanford Hospital & Clinics  
Executive Committee Chair

### Secretary-Treasurer

**Reece Fawley**  
Executive Director  
Health Plan Strategy & Transplantation  
Chief Contracting Officer,  
UCSF Medical Center &  
UCSF Benioff Children's Hospital  
Executive Committee  
Finance Committee Chair

### Chief Executive Officer

**Cynthia D. Siljestrom**  
Donor Network West  
Ex-Officio  
Executive Committee  
Finance Committee

### Board Members

**Tim Buckhout**  
Coroner/ME, Retired  
Audit Committee

**Brian Dowling**  
VP of Public Affairs  
Compensation Committee

**Carlos Esquivel, M.D., PhD**  
Chief of Division of Transplantation  
Lucile Packard Children's  
Hospital at Stanford

**Hamila Kownacki, RN**  
Chief Operating Officer,  
California Pacific Medical Center  
Executive Committee  
Finance Committee

**Lloyd R. Lacuesta**  
Journalist, Retired

**Kathleen F. Lynaugh, BS/RN, MBA, JD**  
Associate General Counsel  
Blue Shield of California, San Francisco  
Executive Committee  
Compensation Committee Chair

**John Rabkin, M.D., FACS**  
Department of Transplantation  
California Pacific Medical Center

**John P. Roberts, M.D.**  
UCSF Medical Center  
Transplant Service

**Jill Sullivan, RN, MSN**  
Vice President of Hospital  
Transformation  
Heart & Transplant Service Lines  
Lucile Packard Children's  
Hospital at Stanford  
Executive Committee  
Compensation Committee

**Catherine Lan Tran, MBA**  
Chief Financial Officer, Retired  
Audit Committee  
Compensation Committee

**Dolly B. Tyan, PhD (ABHI)**  
Histocompatibility,  
Immunogenetics & Disease  
Profiling Laboratory  
Stanford University Blood Center

**Michelle V. Zyromski, Esq.**  
Zyromski Konicek, LLP

## 2014 Senior Leadership Team

**Cindy Siljestrom**  
Chief Executive Officer

**Nikole Neidlinger, M.D.**  
Medical Director

**Denise Kinder**  
Chief Operations Officer

**Sandra Mejia**  
Chief Financial Officer

**Mark Borer**  
Vice President of Quality Systems

**JT Mason**  
Vice President of Information  
Technology

**Sean Van Slyck**  
Vice President of Organ Program

**Colleen Cieszkowski**  
Director of Hospital & Family Services

**Tasia Estes**  
Senior Risk Analyst

**Susan Hall**  
Director of Quality Systems

**Luis Mayen**  
Director of Procurement Services

**Cathy Olmo**  
Director of Communications

**Sandy Olson**  
Controller

**Kim Patton**  
Director of Clinical Services

**Angela Rosati**  
Director of Tissue Services

**Patti Sutalo**  
Director of Human Resources



## 2014 Medical Advisory Board

### Co-Chairs

**Nikole Neidlinger, M.D.**  
Donor Network West Medical Director  
Abdominal Transplant Surgeon  
California Pacific Medical Center

**Ryutaro Hirose, M.D.**  
Professor of Clinical Surgery  
Division of Transplant Surgery  
UCSF Medical Center

### Members

**Eloa S. Adams, M.D.**  
Medical Director, PICU  
Kaiser Permanente East Bay at  
The Oakland Medical Center

**James Avery, M.D.**  
Surgical Director of Heart  
Transplant Program  
California Pacific Medical Center

**W. Christopher Bandy, M.D., FACS**  
Chief of Trauma & Emergency Surgery  
Kaiser Foundation Hospital – Vacaville

**Michael J. Bauer, M.D.**  
Donor Network West Tissue  
Services Medical Director

**Julie Brown**  
Julie Brown Associates

**William Bry, M.D.**  
Director of Kidney and Pancreas  
Transplant Program  
California Pacific Medical Center

**Stephan Busque, M.D.**  
Director, Adult Kidney &  
Pancreas Program  
Associate Professor  
Stanford Medical Center

**Dean Charkow, RN, CCRN**  
Manager, Critical Care Services  
John Muir Medical Center

**Waldo Concepcion, M.D., FACS**  
Professor of Surgery –  
Multi Organ Transplantation  
Chief of Clinical Transplantation  
Chief of Pediatric Kidney  
Transplantation  
Stanford University School of Medicine

**Terry Dentoni, RN, MSN, CNL**  
Critical Care, Perioperative  
Services & Specialty Clinics  
Nursing Director  
San Francisco General Hospital

**James Forsell, PhD**  
Retired Tissue Bank CEO

**Richard Ha, M.D.**  
Clinical Instructor,  
Cardiothoracic Surgery  
Stanford University Medical Center

**Jasleen Kukreja, M.D., MPH**  
Assistant Professor of Surgery  
Division of Adult  
Cardiothoracic Surgery  
UCSF Medical Center

**Phyllis Monroe, RN**  
Donor Family Member

**Richard Powers, M.D.**  
Medical Director of Newborn Services  
Neonatal Intensive Care Unit  
Good Samaritan Hospital

**Rajalingam Raja, PhD (ABHI)**  
Clinical Professor,  
Department of Surgery  
Director, Immunogenetics and  
Transplantation Laboratory  
University of California, San Francisco

**Olaf Reinhartz, M.D.**  
Division Chief of Pediatric  
Cardiothoracic Surgery  
Stanford University Medical Center  
Lucile Packard Children's Hospital

**David Shimabukuro, M.D.**  
Associate Professor  
Medical Director 13 ICU  
University of California,  
San Francisco Department of  
Anesthesia & Perioperative Care

**Penny Stroud**  
Cattaneo & Stroud, Inc.  
Voluntary Public Health  
Organization Members

**Alan Yee, DO**  
Stroke & Critical Care Neurologist  
Comprehensive Stroke Care  
California Pacific Medical Center



# Donor Network West Donation Service Area partners save lives through donation

In 2014, Donor Network West recovered 1,007 organs from 305 donors. In addition, 2,223 people said “yes” to tissue donation resulting in 92,000 lives saved and improved. Our selfless donors, giving families, partner hospitals, coroners, and funeral homes contributed to make this possible.

**Tissue Donors:** The number of donors from whom a transplantable tissue was recovered.

**Organ Referrals:** The number of times a hospital contacted Donor Network West due to a patient with a non-survivable illness or an injury.

**Potential Organ Donors:** All referrals determined to have potential for organ donation.

**Organ Donors:** The number of donors from whom a transplantable organ was recovered.

**Organs Transplanted:** How many organs were transplanted; reflects that several organs can come from a single donor.

Partner	Tissue Donors	Organ Referrals	Potential Organ Donors	Organ Donors	Organs Transplanted
<b>East Bay</b>	<b>507</b>	<b>501</b>	<b>125</b>	<b>54</b>	<b>191</b>
Alameda County Coroner	7	-	-	-	-
Alameda Hospital	13	3	0	0	0
Alta Bates Summit Medical Center Alta Bates Campus	10	10	1	0	0
Alta Bates Summit Medical Center Summit Campus	25	20	2	0	0
Contra Costa County Coroner	0	-	-	-	-
Contra Costa Regional Medical Center	3	4	0	0	0
David Grant Medical Center	3	1	0	0	0
Doctors Medical Center San Pablo	13	10	2	0	0
Eden Medical Center	34	74	23	13	49
Fairmont Hospital	0	-	-	-	-
Highland Hospital	20	52	23	9	40
John Muir Medical Center Concord Campus	46	15	2	0	0
John Muir Medical Center Walnut Creek Campus	37	75	28	13	42
Kaiser Foundation Hospital Antioch	11	12	1	1	2
Kaiser Foundation Hospital Fremont	11	5	2	0	0
Kaiser Foundation Hospital Oakland	24	17	6	2	5
Kaiser Foundation Hospital Richmond	13	5	2	2	7
Kaiser Foundation Hospital San Leandro	20	17	2	1	3
Kaiser Foundation Hospital Vacaville	22	13	5	2	10
Kaiser Foundation Hospital Vallejo	20	6	2	0	0

Partner	Tissue Donors	Organ Referrals	Potential Organ Donors	Organ Donors	Organs Transplanted
Kaiser Foundation Hospital Walnut Creek	26	4	0	0	0
Kindred Hospital SF Bay Area	1	0	0	0	0
Livermore VA Nursing Home Care Center	1	-	-	-	-
NorthBay Medical Center	25	21	8	5	11
NorthBay VacaValley Hospital	6	1	0	0	0
San Leandro Hospital	5	6	0	0	0
San Ramon Regional Medical Center	14	6	1	1	4
St. Rose Hospital	22	35	1	0	0
Sutter Delta Medical Center	23	21	1	0	0
UCSF Benioff Children's Hospital Oakland	4	15	6	0	0
ValleyCare Livermore Campus	2	0	0	0	0
ValleyCare Medical Center	26	14	1	0	0
Washington Hospital	20	39	6	5	18
<b>Fresno</b>	<b>345</b>	<b>536</b>	<b>120</b>	<b>50</b>	<b>183</b>
Adventist Medical Center-Hanford	22	21	3	0	0
Adventist Medical Center-Reedley	3	0	0	0	0
Adventist Medical Center-Selma	5	0	0	0	0
Chowchilla Skilled Nursing Facility	0	-	-	-	-
Clovis Community Medical Center	21	32	2	0	0
Coalinga Regional Medical Center	2	0	0	0	0
Community Regional Medical Center	119	309	85	41	150

Partner	Tissue Donors	Organ Referrals	Potential Organ Donors	Organ Donors	Organs Transplanted
Fresno County Coroner	1	-	-	-	-
Fresno Heart and Surgical Hospital	4	7	1	0	0
Kaiser Foundation Hospital Fresno	18	10	1	0	0
Kaweah Delta Medical Center	52	39	3	1	7
Kings County Coroner	1	-	-	-	-
Madera Community Hospital	13	2	0	0	0
Madera County Coroner	1	-	-	-	-
Porterville Developmental Center	1	-	-	-	-
Saint Agnes Medical Center	45	60	8	3	8
Sierra View District Hospital	19	13	1	1	5
Tulare County Coroner	0	-	-	-	-
Tulare Regional Medical Center	9	4	0	0	0
VA Central California Health Care System	1	2	0	0	0
Valley Children's Hospital	8	37	16	4	13
<b>Modesto</b>	<b>259</b>	<b>452</b>	<b>99</b>	<b>35</b>	<b>101</b>
Central Valley Specialty Hospital	1	-	-	-	-
Community Hospice	1	-	-	-	-
Dameron Hospital	9	31	6	1	0
Doctors Hospital of Manteca	3	7	2	0	0
Doctors Medical Center Modesto	45	110	35	14	37
Emanuel Medical Center	15	20	2	0	0
John C. Fremont Healthcare District	1	0	0	0	0
Kaiser Foundation Hospital Manteca	3	3	0	0	0
Kaiser Foundation Hospital Modesto	17	20	1	0	0
Lodi Memorial Hospital	21	6	2	1	4
Memorial Hospital Los Banos	2	0	0	0	0
Memorial Medical Center	59	56	18	10	35

Partner	Tissue Donors	Organ Referrals	Potential Organ Donors	Organ Donors	Organs Transplanted
Mercy Medical Center Merced	22	53	7	3	11
Oak Valley District Hospital	7	2	0	0	0
San Joaquin County Coroner	1	-	-	-	-
San Joaquin General Hospital	7	52	8	2	9
San Joaquin Valley Rehab Hospital	1	-	-	-	-
Sonora Regional Medical Center	7	7	0	0	0
St. Joseph's Medical Center Stockton	29	78	18	4	5
Sutter Tracy Community Hospital	7	7	0	0	0
Tuolumne County Coroner	1	-	-	-	-
<b>Northern</b>	<b>312</b>	<b>396</b>	<b>137</b>	<b>56</b>	<b>186</b>
Banner Churchill Community Hospital	2	0	0	0	0
Banner Lassen Medical Center	1	0	0	0	0
Butte County Coroner	1	-	-	-	-
Carson Tahoe Continuing Care Hospital *	-	0	0	0	0
Carson Tahoe Regional Medical Center *	-	9	3	3	6
Carson Valley Medical Center	2	0	0	0	0
Del Norte County Coroner	1	-	-	-	-
Enloe Medical Center	58	53	12	4	12
Fairchild Medical Center	5	0	0	0	0
Feather River Hospital	14	14	3	0	0
Frank R. Howard Memorial Hospital	2	1	0	0	0
Glenn Medical Center	2	0	0	0	0
Humboldt County Coroner	3	-	-	-	-
Humboldt General Hospital *	-	0	0	0	0
Jerold Phelps Community Hospital	1	0	0	0	0
Mad River Community Hospital	4	2	1	0	0
Mammoth Hospital *	-	0	0	0	0



Partner	Tissue Donors	Organ Referrals	Potential Organ Donors	Organ Donors	Organs Transplanted
Mayers Memorial Hospital	2	0	0	0	0
Mendocino Coast District Hospital	1	0	0	0	0
Mercy Medical Center Mt. Shasta	6	1	0	0	0
Mercy Medical Center Redding	45	45	21	9	40
Modoc Medical Center	0	0	0	0	0
Mount Grant General Hospital *	-	0	0	0	0
Napa County Coroner	5	-	-	-	-
Northern Inyo Hospital *	-	0	0	0	0
Northern Nevada Medical Center	9	9	2	0	0
Orchard Hospital	2	1	1	0	0
Oroville Hospital	10	16	4	3	13
Patient's Hospital of Redding	0	-	-	-	-
Plumas District Hospital	0	0	0	0	0
Redwood Memorial Hospital	6	2	0	0	0
Renown Regional Medical Center	0	154	64	25	83
Saint Mary's Regional Medical Center	30	21	7	1	3
Seneca District Hospital	4	0	0	0	0
Shasta County Coroner	1	-	-	-	-
Shasta Regional Medical Center	27	44	12	8	20
Sonoma County Coroner	7	-	-	-	-
Southern Inyo Hospital*	-	0	0	0	0
St. Elizabeth Community Hospital	6	2	0	0	0
St. Helena Hospital Clearlake	7	0	0	0	0
St. Joseph Hospital Eureka	22	13	5	3	9
Surprise Valley Community Hospital	1	0	0	0	0
Sutter Coast Hospital	8	4	2	0	0
Sutter Coast Home Care	0	-	-	-	-
Sutter Lakeside Hospital	4	0	0	0	0

Partner	Tissue Donors	Organ Referrals	Potential Organ Donors	Organ Donors	Organs Transplanted
Trinity Hospital	0	0	0	0	0
Ukiah Valley Medical Center	7	2	0	0	0
VA Sierra Nevada Health Care System [Reno VA] *	-	3	0	0	0
Vibra Hospital of Northern California	6	0	0	0	0
<b>South Coast</b>	<b>467</b>	<b>696</b>	<b>132</b>	<b>59</b>	<b>199</b>
Arroyo Grande Community Hospital	6	2	1	1	6
Community Hospital of Monterey Peninsula	40	20	4	2	5
Dominican Hospital	18	31	3	0	0
El Camino Hospital	36	33	7	2	6
El Camino Hospital Los Gatos	5	3	1	0	0
French Hospital Medical Center	10	2	0	0	0
George L. Mee Memorial Hospital	1	0	0	0	0
Good Samaritan Hospital	43	45	9	0	0
Hazel Hawkins Memorial Hospital	1	5	0	0	0
Kaiser Foundation Hospital San Jose	30	17	4	3	7
Kaiser Foundation Hospital Santa Clara	34	50	5	2	6
Lucile Packard Children's Hospital	5	31	9	3	10
Monterey County Coroner	2	-	-	-	-
Natividad Medical Center	12	11	4	3	10
O'Connor Hospital	14	19	4	2	2
Regional Medical Center of San Jose	40	146	25	12	46
Saint Louise Regional Hospital	8	4	2	2	4
Salinas Valley Memorial Hospital	15	27	7	2	5
San Benito County Coroner	0	-	-	-	-
Santa Clara County Coroner	11	-	-	-	-
Santa Clara Valley Medical Center	33	29	13	7	26

Partner	Tissue Donors	Organ Referrals	Potential Organ Donors	Organ Donors	Organs Transplanted
Santa Cruz County Coroner	2	-	-	-	-
Sierra Vista Regional Medical Center	9	20	14	8	39
Stanford Hospital and Clinics	58	184	17	8	20
Twin Cities Community Hospital	14	7	2	2	7
Veterans Administration Hospital Menlo Park	0	0	0	0	0
Veterans Administration Palo Alto Health Care System	13	0	0	0	0
Watsonville Community Hospital	7	10	1	0	0
<b>West Bay</b>	<b>333</b>	<b>356</b>	<b>108</b>	<b>51</b>	<b>147</b>
California Pacific Medical Center California Campus	1	2	0	0	0
California Pacific Medical Center Davies Campus	15	24	15	8	17
California Pacific Medical Center Pacific Campus	22	34	12	9	20
California Pacific Medical Center St. Luke's Campus	2	2	0	0	0
Chinese Hospital	0	0	0	0	0
Healdsburg District Hospital	0	0	0	0	0
Kaiser Foundation Hospital Redwood City	18	49	6	4	18
Kaiser Foundation Hospital San Francisco	14	3	2	2	6
Kaiser Foundation Hospital San Rafael	13	4	0	0	0
Kaiser Foundation Hospital Santa Rosa *	-	7	2	2	4
Kaiser Foundation Hospital South San Francisco	7	1	0	0	0
Kentfield Rehabilitation & Specialty Hospital	1	1	0	0	0
Laguna Honda Hospital and Rehab Center	0	0	0	0	0
Marin County Coroner	0	-	-	-	-
Marin General Hospital	26	21	6	2	6

Partner	Tissue Donors	Organ Referrals	Potential Organ Donors	Organ Donors	Organs Transplanted
Mills-Peninsula Medical Center	25	17	3	2	4
Novato Community Hospital	5	2	1	0	0
Palm Drive Hospital	1	0	0	0	0
Petaluma Valley Hospital *	-	2	1	0	0
Queen of the Valley Medical Center	26	17	3	3	11
Saint Francis Memorial Hospital	5	17	3	1	1
San Francisco General Hospital	17	60	28	11	38
San Francisco Veteran Affairs Medical Center	5	1	0	0	0
San Mateo County Coroner	3	-	-	-	-
San Mateo Medical Center	11	4	2	0	0
Sequoia Hospital	13	6	2	0	0
Seton Medical Center	17	12	4	0	0
Seton Medical Center Coastsides	1	0	0	0	0
Sonoma Valley Hospital	7	0	0	0	0
St. Helena Hospital	8	6	0	0	0
St. Mary's Medical Center San Francisco	4	3	2	0	0
UCSF Medical Center Mount Zion Campus	49	0	0	0	0
UCSF Medical Center Parnassus Campus	0	58	16	7	22
Veteran's Home of California Yountville	1	0	0	0	0
Burlingame Health Care Center	1	0	0	0	0
Sonoma Developmental Center	2	0	0	0	0
Other Sources**	13	3	0	0	0
<b>Donor Network West Grand Total</b>	<b>2223</b>	<b>2937</b>	<b>721</b>	<b>305</b>	<b>1007</b>

- Facility has no potential for donation.

\* Not a participating tissue donation partner.

\*\* Other sources include referrals from families, funeral homes and hospice organizations.